

## Welcome to the new digital edition of the AIA DC Newsletter

As promised, we will no longer be clogging your wastepaper basket with hard-copy newsletters. Although we know the old version will be sorely missed, the new and improved digital versions will allow us, and you, to save money in postage and printing costs, will give us more organizational, graphics and color flexibility and will, we hope, produce a more dynamic newsletter.

*We would like to hear from you with comments and suggestions. Please email us at [MFitch@aiadc.com](mailto:MFitch@aiadc.com)*

## 2018 was a busy year for the Board

The 2018 AIA | DC Board met at the Center for Architecture in New York last January to map out a new strategic plan and, after several months of review, it was presented to the membership in our May/June 2018 newsletter. However, the Board did much more than just create the plan and they formed work groups to accomplish the first year goals. So how did they do? Here is an overview:

**Action Item 1:** Strengthen AIA as a link to everybody involved in architecture in our membership with the objective of having 60 corporate affiliates in 2018

**Done! AIA|DC now has 62 Corporate Affiliates.**

**Action Item 2:** Develop a plan to encourage committees to collaborate on programming Ongoing. The plan is developed; we will do an assessment mid-year to see if committees are collaborating.

**Action Item 3:** Create metric(s) to make sure events promote diversity, equity and inclusion, including alternate career paths. Ongoing – this is a huge task. A draft will be presented to the 2019 Board in February for its consideration.

**Action Item 4:** Collect survey data and create report for the Board and membership on the relevancy of our programming

**Done! The Board reviews education results on a monthly basis.**

**Action Item 5:** Launch Leadership Month to provide leadership training for mid-career professionals.

**Done! And planning for 2019 (which may not fit into one month) is underway.**

**Action Item 6:** Build a mentorship program. Still in process.

**Actions Item 7:** Launch Bridge Program.

**Done! For more information about a better way to practice: watch this video >**

**Action Item 8:** Create a website page with information about national competitions. Ongoing. Do you have suggestions on what you'd like to see here?

**Action Item 10:** Study Demographic Changes in our Industry. This is the subject of the January 2019 Retreat in Philadelphia.

**Action Item 11:** Design Advocacy Plan to influence issues related to permitting.

**Done and in process (is anything with permitting ever really finished?) This has been added to the Executive Director's portfolio of duties.**

**Action Item 12:** Develop strategy to better engage DC's resiliency efforts

**Done! The Chapter has been working closely with DC's Resiliency officer and others as DC's Resiliency Plan is being developed.**

**Action Item 13:** Develop a plan for greater visibility of DAC and promote it as a public resource. On going; staff is working on a new public communications plan for 2019

**Action Item 14:** Develop a plan to ensure the viability of DAC through a sustainable reserve fund

**Done! Plan was approved by the Board.**

**Action Item 15:** Develop a program to sponsor competitions on District-wide issues, like affordable housing, including current Metro initiative. Ongoing; hoping to see progress in first quarter of 2019.

While there is a lot still to accomplish we owe a big thank-you to the 2018 Board led by Joseph Sacco, AIA. No pressure, members of the 2019 Board, but you have pretty big shoes to fill.

## Risk Management Tips: Using Contracts to Avoid Untimely Claims

By Dalene A. Radcliffe, Lee/Shoemaker PLLC

Architects can be exposed to potential claims for years after project completion. Design and construction deficiencies may go undiscovered for a long period, leaving Architects exposed for potential claims for many years beyond substantial completion of the project unless the statute of limitations bars the claim. While each jurisdiction differs, the courts in the District of Columbia will apply either the “first breach” rule or the so-called “discovery rule” to determine when the statute of limitations begins to run on a claim. Under the first breach rule, the statute of limitations begins to run from the date of the first breach by the architect. Under the discovery rule, the statute of limitations begins to run when the claimant knows or through exercise of due diligence should have known of the injury. Claimants against architects usually argue that their claims should be governed by the discovery rule, and not the first breach rule, to extend

the timeframe they have in which to pursue a claim.

The standard accrual clause contained in many contracts often requires that claims be commenced within the period specified by applicable law, but in any case, not more than ten (10) years. This, or similar language, leaves the Architect exposed to potential claims for a long period of time following the substantial completion of the project.

While statutes of limitations and statutes of repose (absolute bar to certain claims after a specific period regardless of when or if it could have been discovered) can protect the architect against late claims, modifications to standard contract language can be used to alter the statutory limitations period providing even more protection to the architect. There are several ways to guard against this risk by contract. First, the parties can negotiate to include a provision

which states that claims accrue, at the very latest, upon the substantial completion of the project. In fact, until 1997, the standard accrual language in the AIA documents used substantial completion of a project as a benchmark for the running of the statute of limitations. Second, the parties can negotiate to include a provision which shortens the time period in which claims may be pursued. Finally, the architect can insist on a choice of law provision that incorporates by reference a statute of limitations and statute of repose regime which is familiar (and favorable) to the architect.

The risk of untimely claims can be prevented, or at least minimized, at the contract formation stage of the project. By exercising sound risk management practices in negotiating an accrual clause, a design professional may be able to reduce its exposure to claims made several years beyond the completion of a project.

*This article is intended to provide general legal advice and should not be relied on for specific situations. Consult your attorney for specific legal advice applicable to your situation.*

## AIA|DC Board Votes for Free Continuing Education in 2019

We are pleased to announce that AIA | DC will offer continuing education programs for **free** throughout 2019. License renewal is in April 2020 and this gives our member architects a plethora of opportunities to earn their required credits over the course of the next year.

Check our calendar for updates on upcoming programs like Lunchtime Learnings, site tours, insightful lectures, and design workshops: [aiadc.com/calendar](http://aiadc.com/calendar)

Follow us on Twitter and Facebook for the latest program reminders: [@washingtondcaia](https://twitter.com/washingtondcaia) and [facebook.com/aiadc](https://facebook.com/aiadc)

## AIA|DC 2019 Board of Directors

Marc Fairbrother, AIA	President	Douglas Crawford, AIA	Director at Large	Yiselle Santos, Assoc. AIA	Director at Large
Robert L. Holzbach, AIA	Vice Pres./President Elect	John Crump, AIA	Director at Large	Bill Spack, AIA	Director at Large
Kristopher Takács, AIA	Treasurer	Anna Franz, FAIA	Director at Large	Todd Steighner, AIA	Director at Large
Douglas Palladino, AIA	Secretary	Andy Fuhrmann	Director at Large	Kevin Storm, AIA	Director at Large
Joseph Sacco, AIA	Immediate Past President	Christena McCabe, AIA	Director at Large	Will Teass, AIA	Director at Large
Jason Arnold, AIA	Director of Public Architects	Chris Murray, AIA	Director at Large	Mary Fitch, AICP, Hon. AIA	Executive Director

**AIA|DC News** is published bimonthly by the Washington Chapter of the American Institute of Architects and is distributed to over 2,200 AIA|DC members and corporate and professional affiliates in the Washington, DC metropolitan area.

The editorial deadline for each issue is the first day of the preceding month. Submissions received after this date may be held for publishing due to spatial limitations. Editorial contributions and letters are welcome. We reserve the right to edit submissions. Opinions expressed

by contributing authors do not necessarily reflect the policies or views of the Washington Chapter/AIA, or its officers, directors, or employees.

**EDITOR**

Norman K. Smith, AIA, LEED AP

**MEMBER NEWS ITEMS**

[newsletter@aiadc.com](mailto:newsletter@aiadc.com)

**AIA|DC STAFF**

Mary Fitch, AICP, Hon. AIA  
Executive Director

Katherine Adams  
Development Director  
Scott Clowney  
Exhibitions and Public Programs Director  
Torey Doverspike  
Donor Relations Coordinator  
Louis Duva  
Communications Coordinator  
Sinclair Erdwien  
Deputy Director  
Arash Hafizi  
Education Coordinator  
Melody Harrison  
Member Services Director

Laura Headrick  
Events Manager  
Heritage Honey  
Beekeeper  
Rachel Simonson  
Youth Outreach Director  
Katie Spencer  
Programs Director

**ADVERTISING SALES MANAGER**

Jody Cranford 800-818-0289  
[jcranford@aiadc.com](mailto:jcranford@aiadc.com)



# LEPAGE MILLWORK

A place where old world craftsmanship and cutting edge technology meet to create a new standard of high-end windows & doors for discerning clientele. [www.lepagemillwork.com](http://www.lepagemillwork.com)

1.888. TW.PERRY · [www.twperry.com](http://www.twperry.com)

TW Perry's window specialists and consulting staff have factory trained expertise, years of industry knowledge and experience to be a valued resource in the product selection process. Contact a TW Perry Consultant today to help you on your next project: [windowmetrodc@twperry.com](mailto:windowmetrodc@twperry.com)

**LEPAGE WINDOWS & DOORS AVAILABLE AT TW PERRY:**

BALTIMORE, MD - SILVER SPRING, MD - GAITHERSBURG, MD  
ANNAPOLIS, MD - LEESBURG, VA - SPRINGFIELD, VA



# TW PERRY

WINDOW CONSULTING SERVICES

## Corporate Affiliate Profile

### Alliance Lighting

**Contact:** Mike Devlin  
**Phone:** 443.430.9803  
**Email:** [mdevlin@alliancelighting.com](mailto:mdevlin@alliancelighting.com)



## ALLIANCE LIGHTING

### Lighting for Designed Spaces.

Alliance Lighting's technical and service approach to lighting sales is organized to support your design efforts because clients are looking for lighting solutions rather than simple product information. The close relationships that Alliance staff builds between clients, design professionals and factories delivers a totally unique approach that can service and sustain the project

from design concept through installation. Alliance Lighting looks forward to providing the support you need to make your next project a successful experience.

#### Alliance Lighting offers:

- Commercial and residential lighting solutions
- Product education and technical support
- LED systems design support

- Bespoke lighting solutions for unique results
- Project budget information
- Sustainable lighting solutions in LED, metal halide and fluorescent

For more information visit <http://www.alliancelighting.us/>.

## DAC Welcomes its Third Bee Hive! Beeing Here at DAC

Did you know we have an apiary on the roof of DAC that is home to over 200,000 honey bees?

The video shows Heritage Honey beekeeper, Pavel Snejnevski, installing our third hive and introducing the workers into their new environs.

The District of Columbia is an especially good home for bees with its vast quantity of flowering plants and our city is home to over 86 apiaries. Bees from our colony benefit from our proximity to the National Mall, gathering pollen from the area's many gardens, as well as from Washington's famous Cherry blossoms along the Tidal Basin. Fortunately for bees, cities are generally free from agricultural pesticides, making them a particularly hospitable place for those bees that are considered under threat.

Pollinating bees are a crucial part of our ecosystem and many of the world's crops are reliant on them. Here in DC, bees are responsible not only for their delicious honey, but the health of our city's parks and gardens as well.

## Architecture Month 2019

April is Architecture Month and 2019 marks our 22nd annual series of public programs. The Month will feature behind the scenes tours, interactive lectures, and exclusive parties throughout the city that will shine a spotlight on Washington's design culture for architecture enthusiasts of all ages. Join us to celebrate architecture with events that will be of interest to DC residents, visitors, architectural enthusiasts, and children alike. In addition to sponsoring these events, programs also provide valuable continuing education credits for design professionals. For more information, [aiadc.com/ArchitectureMonth2019](http://aiadc.com/ArchitectureMonth2019)

#### Series events and challenges will also include:

- Each day during Architecture Month, we will feature one project/building/site at a Building of the Day Tour. During these tours, representatives from the design team will showcase their project for members of the public. [aiadc.com/ArchitectureMonth2019](http://aiadc.com/ArchitectureMonth2019)
- For the fourth year, the District Architecture Center is sponsoring a competition to design a poster that promotes Architecture Month. The winning poster design will be used as a common visual link for all activities and will be featured in the AIA | DC Newsletter, Newsflash and across our social media channels. The deadline is February 1, 2019 and the theme of Architecture Month 2019 is Connecting Cultures. Special consideration will be given to submissions that fit the theme, and incorporate the Washington Monument in the design. [aiadc.com/ArchitectureMonth2019](http://aiadc.com/ArchitectureMonth2019)

## CANstruction 2018 Award Winners

Our 2018 theme CAN't Stop the BEET was a "hit" and the ingenuity of Washington's architecture community was on full display. The event also illustrated the enduring attraction of puns. We tremendously appreciate the generosity of our sponsoring firms, volunteers, and visitors who donated to this effort. In all, over 65,000 cans of food were donated to the Capital Area Food Bank.

### Jury:

- John Peavey, PE - Senior Director, Codes and Standards Policy, The American Institute of Architects
- Todd Ray, FAIA, LEED-AP - Principal, Page
- Jared N. Zurn, AIA - Director, Examination, NCARB

### Recognitions went to the following:

**Best Original Design/Jurors' Favorite - "BEET IT, Hunger"** by AECOM

**Structural Ingenuity - "My HeartBEET Will Go On"** by Cooper Carry

**Best Use of Labels - "CAN You Feel the Love Tonight?"** by HITT and Gensler

**Best Meal - "Ground Control to Major Tom(ato)"** by Fillat+ Architecture

**Most Cans - "Come on Beets, Do the Loco-Motion: Union Station to Beetsville!"** by Microdesk

**Honorable Mention: Best Expression of the Theme - "The 'Beetboxer'"** by Gilbane Building Company

**Honorable Mention: I"CAN" Award for an Iconic Image - "We CAN Get Some Satisfaction - A Rolling Stones Tribute to Ending Hunger"** by Hartman-Cox Architects

**People's Choice - "Yellow CANmarine by the BEETles"** by Beyer Blinder Belle, Whiting-Turner, and GordonDC

Visit [aiadc.com/CANstruction2018Winners](http://aiadc.com/CANstruction2018Winners) to see images of all the winning projects.



### Thank you to all the teams who participated in this year's CANstruction:

AECOM  
 AGC of DC  
 AIA Potomac Valley and University of Maryland School of Architecture AIAS  
 Barnes Vanze Architects, Inc.  
 CANNONDESIGN  
 Cooper Carry, Inc.  
 DLR Group  
 EYP  
 Fentress  
 Fillat+ Architecture  
 FOX Architects  
 Gilbane Building Company

Hartman-Cox Architects  
 HITT Contracting and Gensler  
 Michael Baker International  
 Microdesk  
 Muse Architects  
 MV+A Architects  
 Page  
 Procon Consulting LLC  
 Silman  
 SmithGroup and DPR Construction  
 TEEL Construction  
 Torti Gallas + Partners  
 Turner Construction and Mosa  
 Whiting-Turner Contracting Company - Beyer Blinder Belle - Gordon Architects

**Need to impress?**

**We Can Do Rush Orders!!!**

info@3dstormstudio.com



**3D Virtual Reality**

**3D Architectural Renderings**

**3D Walkthrough & Flyby Animations**

We Provide High Quality 3d Architectural Rendering & Animation Services in Metro DC

**3DSTORMSTUDIO**  
ARCHITECTURAL RENDERING AND COMPUTER GRAPHICS SERVICES  
1050 Connecticut Avenue, NW, Suite 500, Washington, DC, 20036

**Call 571.243.0236**



## REALIZE YOUR FULL POTENTIAL **with BIM**

We can help you get the ROI you want from your design processes and software, like Autodesk Revit, Navisworks, BIM 360 and Bluebeam.

**We're here to help you:**

- › Make the transitions to 3D and BIM, to leverage the benefits of modeling
- › Maximize the benefits of the technology you've purchased
- › Evolve workflows and processes to use your model data more efficiently
- › Streamline workflows and create design standards
- › Seamlessly update processes and roll out learning paths

Get the unrivaled expertise of CADD Microsystems on your team, and we'll bring with us our decades-long partnerships with industry leaders like Autodesk, Bluebeam and Global eTraining.



Call: 800.550.CADD | Click: [www.caddmicrosystems.com/tpa](http://www.caddmicrosystems.com/tpa)



# DESIGNING FOR EXTREMES

BUILDING A RESILIENT CITY

Designing for Extremes is a symposium on designing, building, and renovating the next generation of buildings to create and protect market value in a more volatile weather environment. The event is co-sponsored by the Washington Chapter of the American Institute of Architects and George Mason University's Center for Real Estate Entrepreneurship.

Join us at the District Architecture Center to hear from leading climate experts, designers, policy makers, and real estate developers that are creating innovative strategies for resiliency, disaster mitigation, and recovery after extreme weather events. Participants will gain knowledge and tools for operating in our changing weather environment and learn how to implement innovative solutions for creating the next generation of buildings.

**Speakers include:**

- Louis A. Gritz, Ph.D., Vice President, Research, FM Global
- Kate Johnson, Chief, Green Building & Climate Branch, DC Department of Energy and the Environment
- Ben Myers, Director of Sustainability, Boston Properties
- Jon Penndorf, FAIA, Senior Associate, Senior Project Manager, Sustainability Leader, Perkins+Will
- Jason Samenow, Weather Editor, The Washington Post and Capital Weather Gang Chief Meteorologist
- Alan Tunstead, Associate Principal, Arup

For more information, [aiadc.com/DesigningForExtremes](http://aiadc.com/DesigningForExtremes)

**New Members**

AIA | DC's Newest Members  
Please welcome our new and returning members!

- Tannaz Alavi, Assoc. AIA
- Christina Bahou, Assoc. AIA
- Matthew J. Boland, AIA
- Nolan P. Brennan, Assoc. AIA
- Laura V. Burnett, Assoc. AIA
- Brigid M. Callaghan, Assoc. AIA
- Anne X. Chen, Assoc. AIA
- Elena Dieci, Assoc. AIA
- Andrea Dietz, AIA
- Mario C. Dominguez, Assoc. AIA
- Megha Dubey, Assoc. AIA
- Jordan Duke, Assoc. AIA
- Nolan Ediger, AIA
- Timothy M. Farina, Assoc. AIA
- Robert Goren, Assoc. AIA
- Val Hawkins Jr., AIA
- Anta Henriques-Sequeira-de-Miranda, AIA
- Alexander C. Holstein, AIA
- Ching-Che Huang, Intl. Assoc. AIA
- Steve R. Knight, AIA
- Emilio A. Markin, AIA
- Carina Mohammed, Assoc. AIA
- Tsahai Pettiford, Assoc. AIA
- Caroline F. Pickart, Assoc. AIA
- Ethan K. Porter, Assoc. AIA
- Janki D. Shah, Assoc. AIA
- Reed Simonds, AIA
- Kathleen A. Smith, AIA
- William J. Smith III, AIA
- Asako Sperry, AIA
- Tamanna Tiku, Assoc. AIA
- Erica J. Vinson, Assoc. AIA
- Julianna M. vonZumbusch, AIA
- Hao Wang, Assoc. AIA
- Sachini H. Wickramanayaka, Assoc. AIA
- Sicheng Zhou, Assoc. AIA
- Wen Zhu, Assoc. AIA

**Newly Licensed Architects**

AIA | DC would like to congratulate our newest licensed architects!

- |                             |                                 |                               |                                 |
|-----------------------------|---------------------------------|-------------------------------|---------------------------------|
| • Guilherme A. Almeida, AIA | • Daniel Ghielmetti, AIA        | • Leah Kleinman, AIA          | • Penelope I. Peralta, AIA      |
| • Kaitlyn Badlato, AIA      | • Kelly Davies Grace, AIA       | • Sherman Lai, AIA            | • Chau M. Pham, AIA             |
| • Nicole M. Cavanaugh, AIA  | • Christopher D. Haverkamp, AIA | • Diane Leeson, AIA           | • Daniel E. Ranostaj, AIA       |
| • Meredith L. Ellinger, AIA | • Colleen G. Healey, AIA        | • David Paul Leestma, AIA     | • Li Ren, AIA                   |
| • Mark N. Elliott, AIA      | • Martin J. Hedrick, AIA        | • Kate Luxner, AIA            | • Abbie L. Rolando, AIA         |
| • Brian L. Forehand, AIA    | • Desiree J. Hollar, AIA        | • Meredith Magin, AIA         | • Matthew D. Schmalzel, AIA     |
| • Samuel A. Forman, AIA     | • Riziki House-Okon, AIA        | • Thomas F. Masino, AIA       | • Veena Shahsavarian, AIA       |
| • Kahlil M. Francis, AIA    |                                 | • Lauren D. Mears, AIA        | • Christopher J. Steinberg, AIA |
|                             |                                 | • Katherine A. Miller, AIA    | • Derrick Steltzer, AIA         |
|                             |                                 | • Hannah E. Myers, AIA        | • Carlos G. Vigo, AIA           |
|                             |                                 | • Miss Caitlin A. Parker, AIA |                                 |



**HENRY ADAMS**  
CONSULTING ENGINEERS  
MECHANICAL, ELECTRICAL, & PLUMBING ENGINEERS

The Natatorium at the Pilot School -- A New \$34M, 88,000 SF School.

1090 Vermont Avenue, NW, Suite 230 | Washington, DC 20005  
(202) 450-5798 | [www.HENRYADAMS.com](http://www.HENRYADAMS.com)

**DESIGN SOLUTIONS**

FIND A TRUSTED PARTNER IN WASHINGTON GAS

[Learn more at NaturalEnergyPartner.com](http://NaturalEnergyPartner.com)

When designing natural gas solutions for multifamily and commercial projects, partner with Washington Gas and benefit from:

- CUSTOM DESIGN OPTIONS
- COMPETITIVE COST SAVINGS
- COMPLIMENTARY EDUCATION
- ENERGY EFFICIENT SOLUTIONS

**Washington Gas**  
A WGL Company  
THE NATURAL ENERGY PARTNER





Thank you to everyone who made the 2018 Fall Design Fête a success! We are proud to have shared the evening with all those who attended the event at the incredible Washington National Cathedral. Once again, we sincerely thank our sponsors for their support in making another year of WAF programs possible:

HARTMAN-COX  
ARCHITECTS

SOM



**Corbel**

- AECOM
- ARUP
- Ayers Saint Gross
- Barnes Vanze Architects
- Bonstra | Haresign ARCHITECTS
- Brailsford & Dunlavey
- CallisonRTKL
- Clark Construction Group, LLC
- David M. Schwarz Architects Charitable Foundation
- EL Studio

Encore Sustainable Design, LLC

- Fentress Architects
- Gensler/GHT
- The Horizon Group
- JACOBS
- KUBE Architecture
- MCN Build, Inc.
- MV+A Architects
- Quinn Evans Architects
- Shalom Baranes Associates Architects
- Simpson Gumpertz & Heger Inc.
- SmithGroup

**Quoin**

- Ames & Gough
- Aronson, LLC
- BluEdge
- Blue Skye Construction, LLC
- Consigli Construction
- cox graae + spack architects
- CS Consulting Engineers, Inc.
- Cunningham | Quill Architects
- di Domenico + Partners
- EB5 Capital
- Eric Colbert & Associates
- EYP Architecture and Engineering
- Field + Tung
- Forrester Construction
- FOX Architects
- Glass Construction, Inc.
- Grunley Construction Company, Inc.
- HDR
- Hickok Cole Architects
- Hill & Hurtt Architects
- HKS
- Kogan & Company
- LAI: leeandassociatesinc
- Lee/Shoemaker PLLC
- LSG Landscape Architecture
- MCSHANE, PC
- David Metzger, FAIA
- Neumann Lewis Buchanan Architects
- Sean Patrick Nohelty, AIA
- Perkins Eastman
- Perkins + Will
- Shinberg, Levinas Architects
- Stantec
- STUDIOS Architecture
- Thornton Tomasetti
- Traditional Building Magazine
- Walter P. Moore
- WDG Architecture

AIA | DC MEMBER NEWS



**CORE architecture + design** has announced several awards and project updates and recognitions. The DC Public Library, West End Branch, is a finalist in the Interior Design Best of Year Awards, honoring the most significant design work of the year worldwide. Luxury condominium building 2501 M Street NW won the Delta Associates' 22nd Annual Apartment and Condominium Industry Award for Excellence for 'Best Washington/Baltimore Mid-Rise Condominium Community.'

CORE also worked with Gould Property Company to complete the accelospace AP2 Spec Suites in Crystal City. Accelospace delivers pre-built, creative office suites designed for young companies that have outgrown coworking spaces. CORE's hospitality team also designed Le Kon for Bravo's Top Chef Katsuji Tanabe as well as the new Silver Diner prototype in Columbia, MD.



DC Public Library, West End Branch: Ron Ngiam



Accelspace: Rendering by CORE architecture + design

**D**LR Group is pleased to announce two new hires.

Dina Sorensen, Assoc. AIA, LEED AP BD+C, is the K-12 Education Design Leader for DLR Group's Washington, D.C. studio. In her design work, Dina emphasizes a holistic approach to designs for learning through research. She also currently leads the AIA CAE Research Sub-Committee.



Dina Sorensen, Assoc. AIA, LEED AP BD+C

Kwame Bailey leads business development efforts for DLR Group's K-12 Education studio. He has spent the majority of his business development career in the K-12 marketplace in the Washington, D.C. metropolitan area and at DLR, will be responsible for establishing new relationships and managing existing clients to build the firm's K-12 Education practice on the east coast.



Kwame Bailey

## ARCH RESOURCES, LLC.



Mike Clancy, CSI, CDT  
Architectural Representative

BUILDING VALUE SINCE 1906

29 Mainland Rd • Harleysville, PA 19438

Phone 267-500-2142 • Fax 215-256-6591

mike@archres-inc.com • <https://archres-inc.com>

Washroom Equipment Since 1908

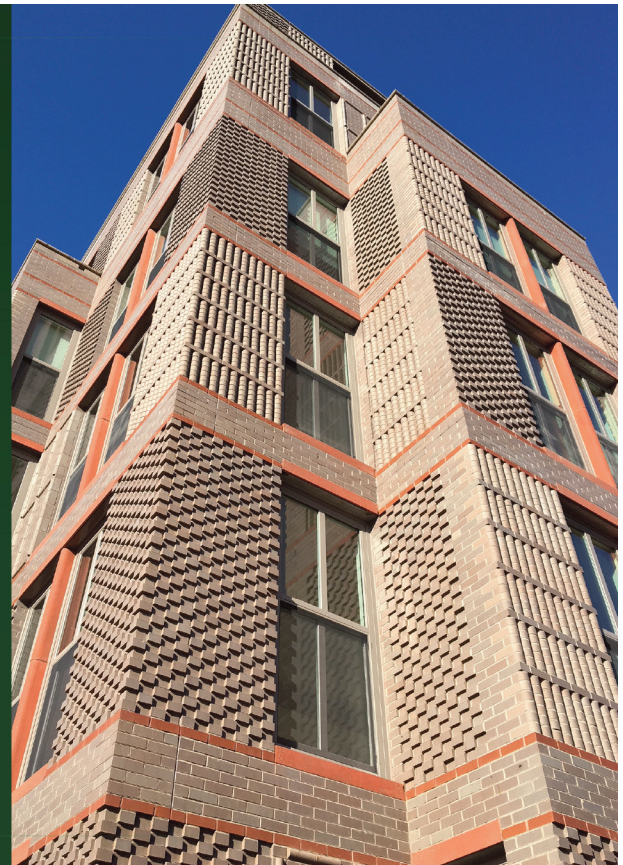


Lasting. Beautiful. Classically Modern.

Potomac Valley Brick offers architects the widest selection of quality masonry products in the region. Our expertise in the product selection, design and application of the industry's finest and most prestigious masonry lines has been helping architects achieve their building design dreams for more than 40 years.

[www.pvbrick.com](http://www.pvbrick.com) | (301) 309-9600

Baltimore • Easton • Frederick • Gaithersburg • Newington • Rockville • Salisbury



## K

**KCCT** is pleased to announce the promotion of Dan Lavoie to Associate. Dan began his career at KCCT as an intern in 2002. Today, he serves as Project Manager and Senior Architect in the International Studio where he plans and designs the rehabilitation/renovation and new construction of U.S. embassies and their tenants. Dan has been involved with more than twelve embassy projects in highly-sensitive areas around the globe.

## P

**Perkins Eastman** is pleased to announce quite a few promotions in their Washington, DC office. Andrea Luccioni Shaw AIA, LEED AP and Mary Rose Rankin AIA, LEED AP have been promoted to Principal while Daena Tamborini Padilla AIA, LEED AP, WELL AP and Jason Abbey AIA, LEED AP have been promoted to Associate Principal. Promotions to Senior Associate include Kerrie Frymire CPSM, Mathew Hart AIA, LEED AP, Tim Bertschinger AIA, Claire Dickey AIA, LEED AP BD+C, Anthony Fusco AIA, LEED AP, and Kristina Vidal AIA, LEED AP BD+C. Promotions to Associate include Valerie Boudreaux AIA, LEED AP BD+C, WELL AP, Rhett James AIA, Deana Vogelgesang AIA, LEED AP BD+C, Nicholas Williams AIA, Stephanie Orudiakumo, Richard Stone, Chen Zhao LEED AP BD+C, Matthew Miller RA and Pallavi Puranik RA, WELL AP, LEED Green Associate.

## Q

Historic preservation specialist Patti Kuhn Babin, has joined the Washington, D.C., office of Quinn Evans Architects as an architectural historian. Kuhn Babin has extensive experience in the Mid-Atlantic region and has researched, produced reports and prepared National Register of Historic Places nominations for dozens of landmark properties, battlefields, cemeteries, military facilities, and landscapes throughout the region.



Patti Kuhn Babin

Prior to joining Quinn Evans Architects, Kuhn Babin served as a cultural resource specialist for the National Capital Region of the National Park Service.

## S

**Stantec** has welcomed three hires to its Washington, DC-based architecture and design team. Thomas (Ted) Brady joins the firm as Senior Project Designer and Business Development Manager, Brad King, AIA LEED GA, as a Principal in the Commercial practice and Francisco Waltersdorfer joins as a Senior Associate supporting the advancement of Stantec's work in the Commercial and Mixed-Use sectors.



Ted Brady



Brad King



Francisco Waltersdorfer

## W

**WSP**, an acoustic consultancy, has added Andrew Parise as Eastern Region acoustics lead. WSP is currently working on acoustic design projects across the U.S. and Parise will assist in those efforts.

WSP is also in the early stages of researching and developing the use of virtual reality (VR) and augmented reality (AR) systems to provide a way for clients to hear what a space will sound like before it is built.



Andrew Parise

AIA|DC members may submit "Member News" items to [newsletter@aiadc.com](mailto:newsletter@aiadc.com).



## WAF Annual Report 2018

Landmark events and innovative activities this year included introducing new programs, expanding existing programs, attracting more and more kids and adults, and engaging new funders.

It was a very busy year for children's programs. The Design Like A Girl Mentoring program kicked off the year with a foundational day of Architecture 101. After that, the girls explored designing for space with help from female NASA engineers, learned about healthy materials and how the spaces they occupy influence how people feel. They wrapped up their year with a look at thoughtful design for memorials and sacred spaces.

WAF's first STEM Fair, How Women Work in the Design and Building Industry, started the year off with a huge success by attracting more than 100 girls who learned about WAF programs. Participants were also introduced to women working in design-related fields by our partners at the Potomac Chapter of ASLA, Thornton-Tomasetti, Steelcase, Coalesse and Carrier, among others. It was a busy Saturday at DAC!

On Saturdays from January thru March, the kids in the Archi-Builder program worked to build a habitat for a capital city on Mars which they exhibited at the WAF booth at the US Festival of Science and Engineering. Approximately 350,000 students, parents and teachers had a chance to see the final design.

Architecture in the Schools continued its long-running success with 57 volunteers working with 193 students in 12 classrooms in the spring semester and nearly 200 children in another dozen classrooms in the fall semester. In August, children spent a week at DAC Summer Camp designing



spaces to tell the stories of Superheros (and heroines, of course).

Building on the work that began last year to re-create the Children's Neighborhood Architecture Tours as interactive web-based tools, three new tours were added in 2018, bringing the total number to five. The tours include the White House neighborhood, Capitol Hill, Shaw / Blagden Alley, Penn Quarter and Dupont Circle with more to come.

Finally, in 2018 WAF was able to provide scholarships to help three students continue their university education to pursue a career in architecture. Chinedu Adiele attends Virginia Tech, Mariah Stewart is at Tuskegee and Chidera Udeh is at Temple. Good luck to all three.

### WAF's 2018 outreach to adults was also successful and just as busy as the children's portion.

The theme of this year's Architecture Month, reBirth: *Washington DC 50 Years after 1968*, filled the month of April with 51 lectures, tours and other events and featured ReBIRTH: Washington, DC 50 Years After 1968 exhibition which opened on April 2. In all, the exhibition and Architecture Month activities engaged more than 1000 people.

CANstruction, in a partnership with the National Building Museum, was once again a highlight of Thanksgiving week. Working with the theme of CAN't Stop the

Beet, 26 teams of architects and their friends and families used more than 65,000 cans which made it possible to donate 69,367 pounds of food to our program partner, the Capital Area Food Bank.

With more than 70 programs at the District Architecture Center and tours to interesting sites, there was plenty of activity on the WAF schedule this year. Tours for WAF members and friends included visits to the Washington National Cathedral and the new West End Public Library while DAC hosted screenings of films about Rosenwald Schools and the City of Hope. DAC lecture topics included Landscape Art and Urbanism, Residential Architecture – Elevating the Everyday and also Rallying for Rights: The City as a First Amendment Landscape.

And, of course, none of this would have been possible without the generous support of AIA | DC and DAC members and the local foundations, organizations and agencies who provided funding for WAF programs. Our thanks go out to the DC Commission on the Arts and Humanities, HumanitiesDC, the Clark Winchcole Foundation, the National Trust for Historic Preservation, DC Preservation League, the Dimick Foundation, the Nora Roberts Foundation, the Hattie M. Strong Foundation, the Speyer Foundation, the KM Foundation, Pepco/Exelon, the AIA Component Scholarship Fund, and the AIA/Armstrong World Industries Foundation Learning By Design grant program.

